

SWITZ Antivirus 2013

User Guide



Content

Download SWITZ Antivirus 2013	4
Installation SWITZ Antivirus 2013.....	4
System Status	6
System Scanning.....	8
When SWITZ Antivirus 2013 finds a threat.....	10
SWITZ Antivirus 2013 Preferences	10
Real time system protection	12
SWITZ Antivirus 2013 protection components	13
Databases and program modules updates	16
SWITZ Antivirus 2013 registration.....	17
Customer support.....	19



Dear user!

We sincerely thank you for your choice of **SWITZ Antivirus 2013** - reliable integrated information security solutions.



SWITZ Antivirus 2013 includes anti-virus functionality (that detects and eliminates viruses, spyware, adware and other malware, worms, Trojans, rootkits and other threats) and the firewall that protects your work online.

Reliability of **SWITZ Antivirus 2013** makes usage of the computer connected to Internet more safe. SWITZ Antivirus 2013, unlike many other antivirus software does not load the system and does not make conflicts with other installed products.

SWITZ Antivirus 2013 – is easy to use product, with minimal design and lots of useful functions, reliable and efficient at the time.

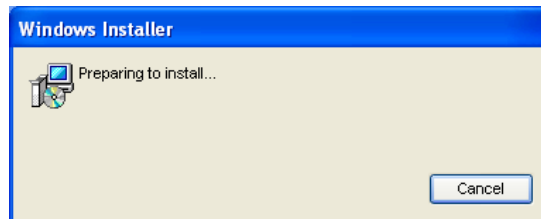
Download SWITZ Antivirus 2013

Distribution **SWITZ Antivirus 2013** is free and available from the project site SWITZantivirus.com

Installation SWITZ Antivirus 2013

Proper installation of **SWITZ Antivirus 2013** is provided by **SWITZ Antivirus 2013** Installation Wizard. You just have to follow the wizard.

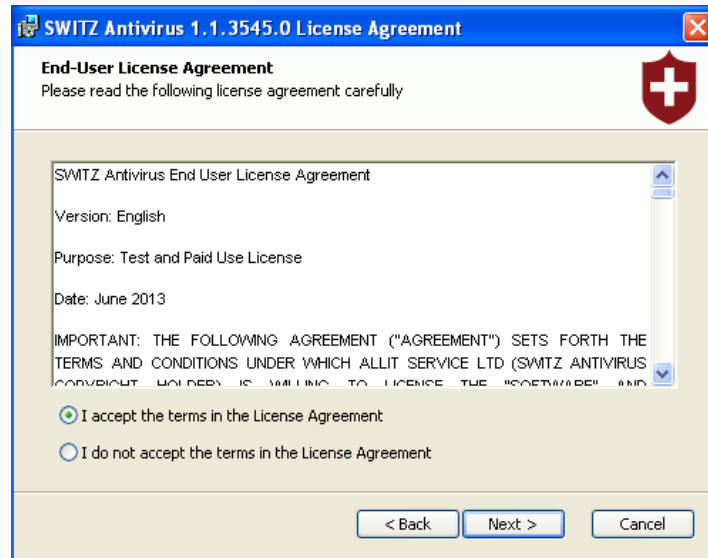
Preparing to install



Starting the Installation Wizard

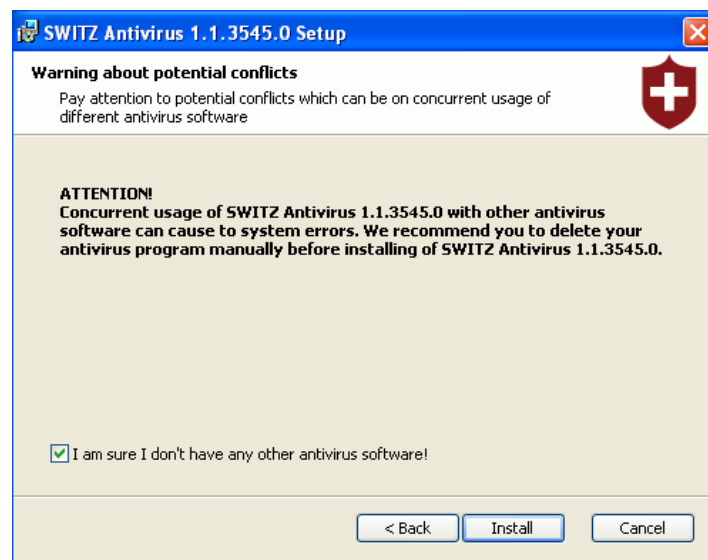


Read the license agreement and choose "I agree with the license agreement" if you agree with it, click "Next"



When installing **SWITZ Antivirus 2013** you should pay attention to some important notes:

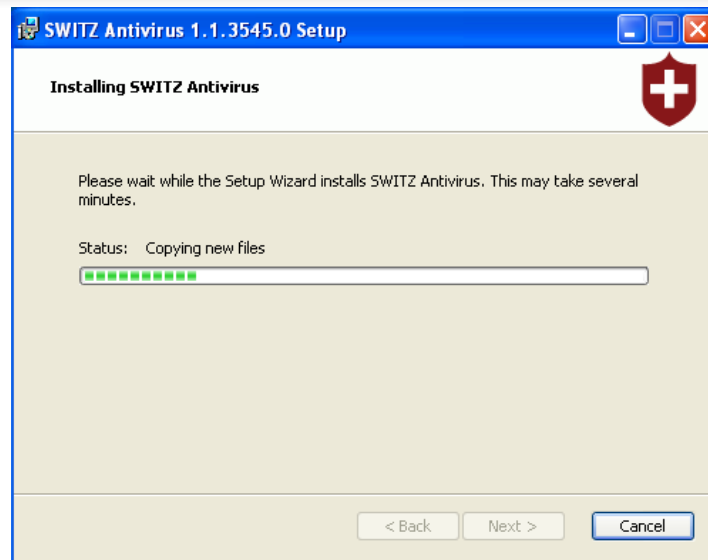
Before installing **SWITZ Antivirus 2013** the Installation Wizard emphasizes that the presence of other already installed antivirus software can cause conflicts in the operating system.



There are several reasons that limit a usage of multiple antivirus products on the same computer:

- Anti-virus programs request the same system files as you work. Simultaneous requests to system resources can cause conflict or failure of system.
- Some antivirus products offer a scanning service in real time. Such scanning requires system resources. Your computer can start working much slower.

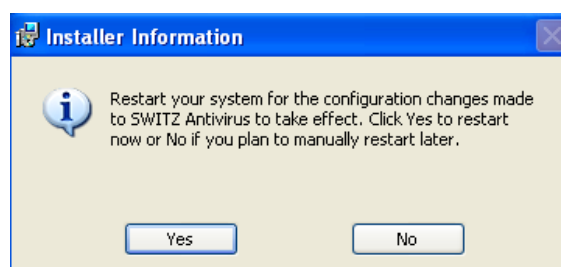
The installation process



Installation completed successfully








Restart the computer to successfully complete the installation



System Status

SWITZ Antivirus 2013 automatically monitors the system status in terms of security and provides summary information in the **System Status** in any window of the program.

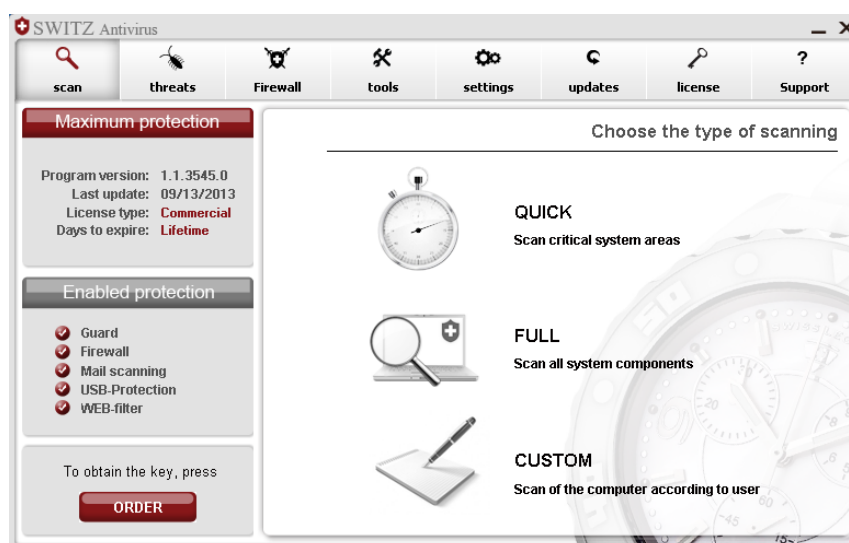
Maximum protection Program version: 1.1.3545.0 Last update: 09/13/2013 License type: Commercial Days to expire: Lifetime	WARNING!  Active threats 1 One or more active threats are waiting for user actions. Fix now	WARNING!  Guard Guard, which is designed to check the system status in real time and block threats just-in-time, is turned off. Fix now 3 problem left Next >>
Enabled protection <ul style="list-style-type: none"><input checked="" type="checkbox"/> Guard<input checked="" type="checkbox"/> Firewall<input checked="" type="checkbox"/> Mail scanning<input checked="" type="checkbox"/> USB-Protection<input checked="" type="checkbox"/> WEB-filter		
To obtain the key, press ORDER	To obtain the key, press ORDER	To obtain the key, press ORDER

WARNING!  Mail scan Real-time mail scan is turned off. Fix now 3 problem left Next >>	WARNING!  USB protection USB protection that is designed to protect against viruses on removable media disabled. Fix now 3 problem left Next >>	WARNING!  Firewall Firewall is turned off Fix now 3 problem left Next >>
To obtain the key, press ORDER	To obtain the key, press ORDER	To obtain the key, press ORDER

System Status area provides the description on the state of the system and the cause of security vulnerabilities and provides specific actions for their removal. You should only follow the advice and guidance offered by program by clicking **Fix** button.

System Scanning

SWITZ Antivirus 2013 has three scan modes which are available in main window: **Quick**, **Full** and **Custom Scan**. Each set is provided with certain parameters of the mode.



Quick Scan – express scan of the most vulnerable sectors of system. The following objects are checked: system process, Windows system files, all files in Documents and Settings folder.

Quick Scan mode is useful in case of virus suspect after visiting suspicious site or in case when the system works incorrectly.



If you are not using **Guard** function for some reasons, **Quick Scan** mode will be useful for regular periodic scanning, which you can configure to start automatically.

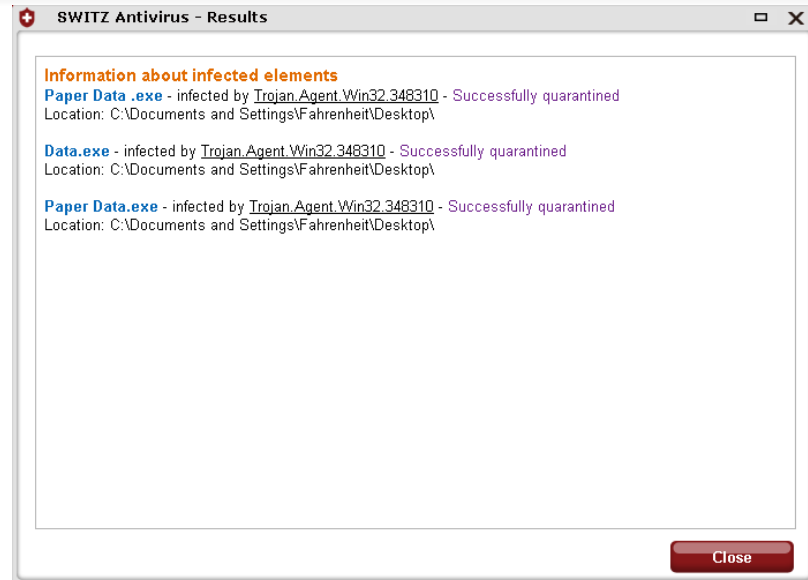
Full Scan – total system check, thorough test of the system. The following items are scanned: system memory, objects that run on startup, backup storage systems, mail bases, hard, removable and network drives.



We recommend you to make a full system scan at least once a week. You should adjust full scan automatically not to forget about this important operation.

Custom Scan – scanning only files and folders that user wishes to check.

After the scan is complete you will receive a detailed report on its results: total time of scanning and detailed information about the number of tested and infected objects.



If the threats are found there will appear a window with information about their names, level of threat and location and **SWITZ Antivirus 2013** will offer an optimal action to neutralize infected files. Also, you can choose a different action if you are sure that your decision is right.

When clicking the **Apply** button, **SWITZ Antivirus 2013** will begin neutralization of all detected threats. This process can take several seconds to several minutes - depending on the number of detected threats. When this process is completed, you will receive a detailed report on the work done, which will contain the name of infected file and action, applied to it.

Threat Name	Level	Location	Action
Trojan.Agent.Win32.348...	■■■■■	...\Paper Data	Quarantine
Trojan.Agent.Win32.348...	■■■■■	C:\Documents and Sett...Data.exe	Quarantine
Trojan.Agent.Win32.348...	■■■■■	C:\Documents and ...Paper Data.exe	Quarantine

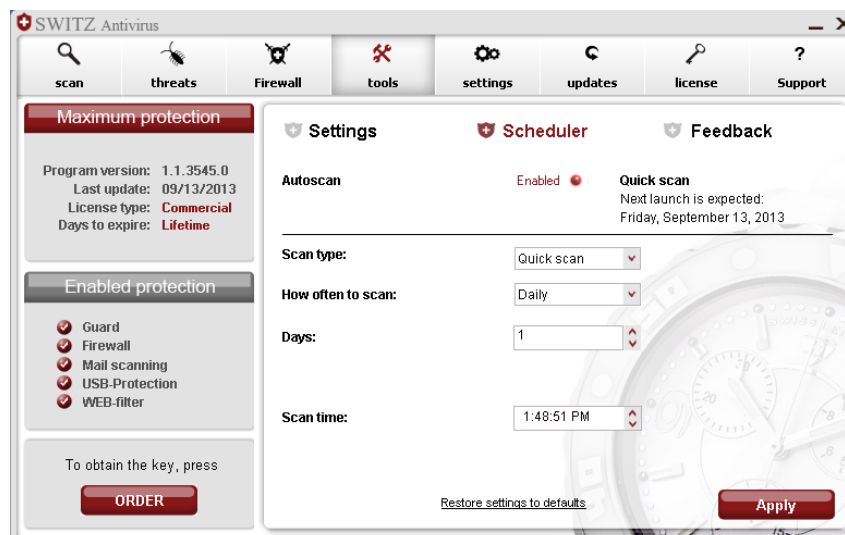
There are three levels of threats in **SWITZ Antivirus 2013**:

FIRST LEVEL (green) - the files are found using heuristics.

SECOND LEVEL (yellow) – viruses that were found in archives, installation files, disk images, etc.

THIRD LEVEL (red) - infected files, which were found on the computer.

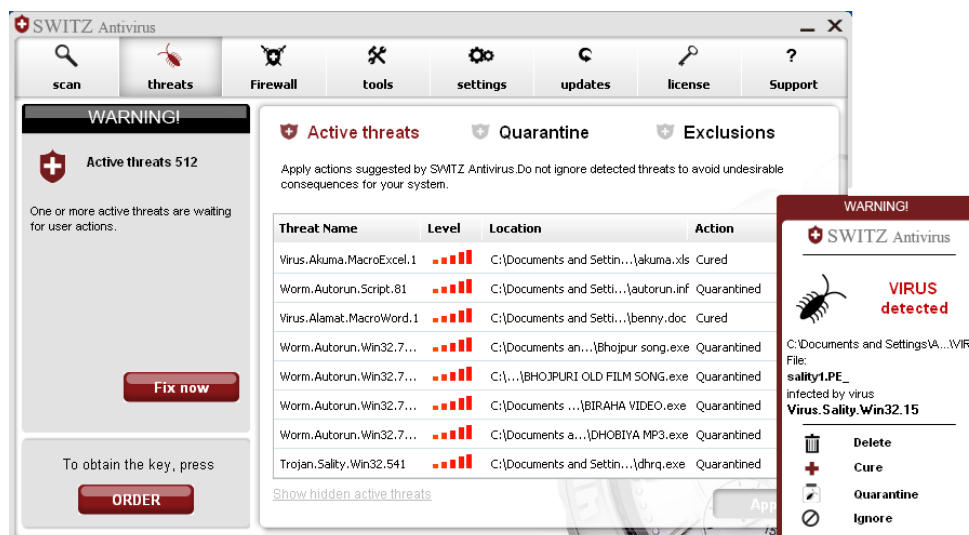
With **SWITZ Antivirus 2013** you will not have to keep in mind the date of next scanning. You can configure to start scanning automatically using the **Scheduler**, which is available from the **Tools** menu.



When SWITZ Antivirus 2013 finds a threat

SWITZ Antivirus 2013 has a built-in algorithm of analysis of the identified threat and determination of the optimal action (hide/ignore/heal/quarantine/delete), which needs to be applied. After the scan is completed, in case of certain threats, you can view the actions, offered by the program.

In the **Threats** window you can view basic information about active threats (name, security level, location) and decide on their future fate.



You can change the reaction of anti-virus module for the object, if you are unsure in actions of antivirus. Otherwise, we recommend performing actions that the program offers.

Also you can **hide** active threats, if you are sure that your decision is right. In this case they will not be shown in the list of Active threats and influence the system status. However, we strongly recommend not doing that and better send suspicious files to our antivirus lab for the detailed study of the threat. To send suspicious files, choose **Tools -> Feedback**.



In some cases, to remove an infected object you have to restart your computer. So do not worry, if not all infected files can be deleted. But in case when even after restart of computer the problem still exists, please seek help from customer service.



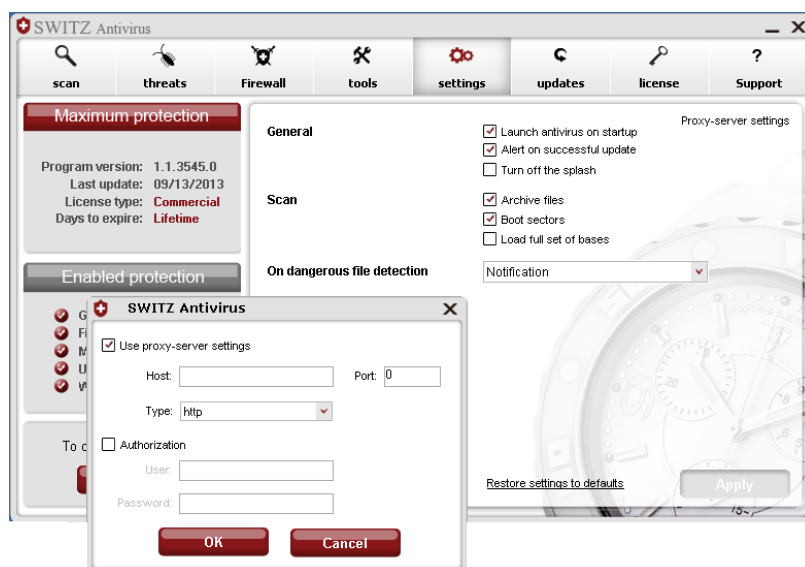
SWITZ Antivirus 2013 uses a special repository – **Quarantine** - to isolate dangerous files. We do not recommend you to restore files from quarantine, if you are not sure that they are safe.



SWITZ Antivirus 2013 has an option for **folders and files exceptions**. If you do not want some folders or files checked, you can put them to the list. It is possible that **SWITZ Antivirus 2013** finds some malicious files are safe, so there was added an option to **Send files for analysis**. There is a note: only files are sent from the list of exceptions, folders are not sent to the laboratory **HDD Labs Inc.** for analysis. In case you've sent files which are not really harmful, experts of **HDD Labs Inc.** will remove them from the base.

SWITZ Antivirus 2013 Preferences

You can configure the program on your own: choose objects to scan, actions to be performed in case of detection, configure the proxy server and more. If you are unsure about the correctness of your actions, we recommend using the default settings.



Settings of SWITZ Antivirus 2013 are divided into 3 categories: general, default actions and messages.

It is strongly recommended to always keep the option “Load at the launch of OS” activated: it will help **SWITZ Antivirus** to protect your system from the very first seconds of the PC launch.

When **SWITZ Antivirus 2013** launches there appears a screensaver that disappears in a few seconds. If you do not want to see it every time you turn on your computer, you should clear the check mark in front of the corresponding field.

The following settings indicate which exactly is to be scanned: archive files, boot sectors. It is recommended to leave a mark in front of each tag, to the maximum protection remained.

Option: "Load full set of base". This option is disabled by default. Antivirus is downloaded with a basic set of virus databases. The basic package includes the most world spread and dangerous viruses. If the antivirus finds at least one virus on your computer, it loads the full set of virus database (without rebooting antivirus). In complete virus database includes basic set and all the old and less ubiquitous virus signatures. In order to antivirus always worked with a full set of virus database you need to include this option in the settings and restart the antivirus.

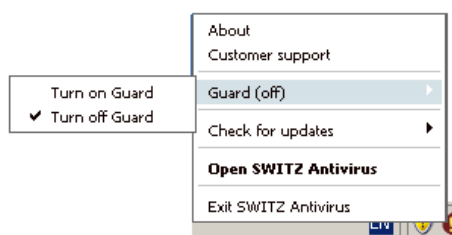
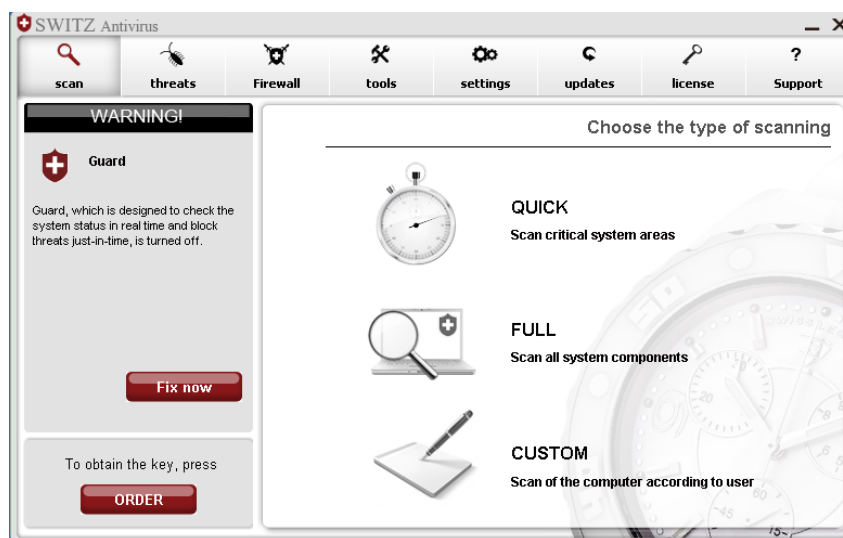
SWITZ Antivirus 2013 has a built-in algorithm of heuristic analysis and therefore provides protection even against the latest viruses and threats.

When the Message section is set, **SWITZ Antivirus 2013** will notify you about the detection of infected or suspicious files in email messages, as well as about the completion of the upgrade process.

Real time system protection

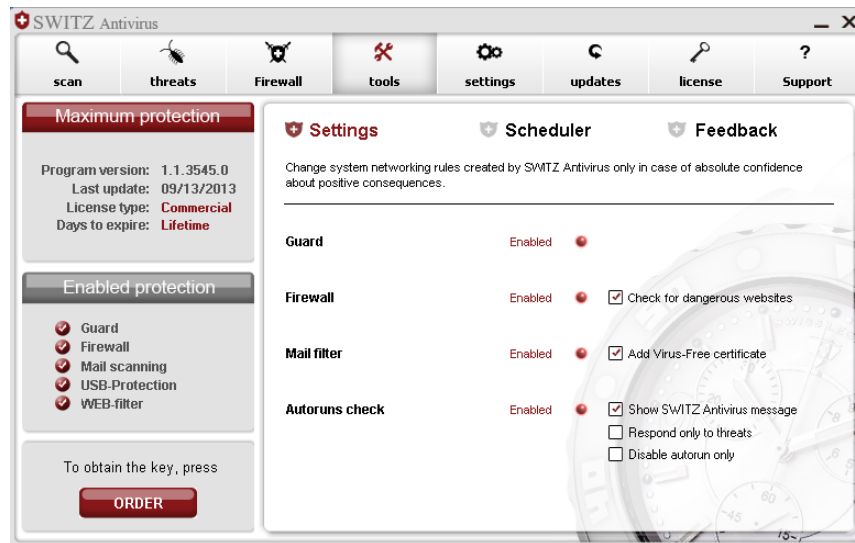
SWITZ Antivirus 2013 has a built-in tracking in real time, entitled **Guard**. **Guard** detects viruses and other malicious programs "at the moment", effectively blocking them even before the entry into the operating system or files, tracks running processes and thus ensures reliable prevention of infection.

By default, the **Guard** is automatically activated every time you start the program. This is a very important component of protection. We do not recommend you disable this feature. To check whether the **Guard** is turned on, press the right mouse button on **SWITZ Antivirus 2013** icon in the taskbar notification area or go to the **Tools -> Properties**.



SWITZ Antivirus 2013 protection components

To guarantee a multilevel protection, except **Guard**, **SWITZ Antivirus 2013** has several important components:



- **Office documents check**

SWITZ Antivirus 2013 checks all types of Microsoft Office documents.

- **Check the files that are downloaded to a computer with Internet**

SWITZ Antivirus 2013 monitor all users download from the Internet and after the detection of malicious files blocks them.

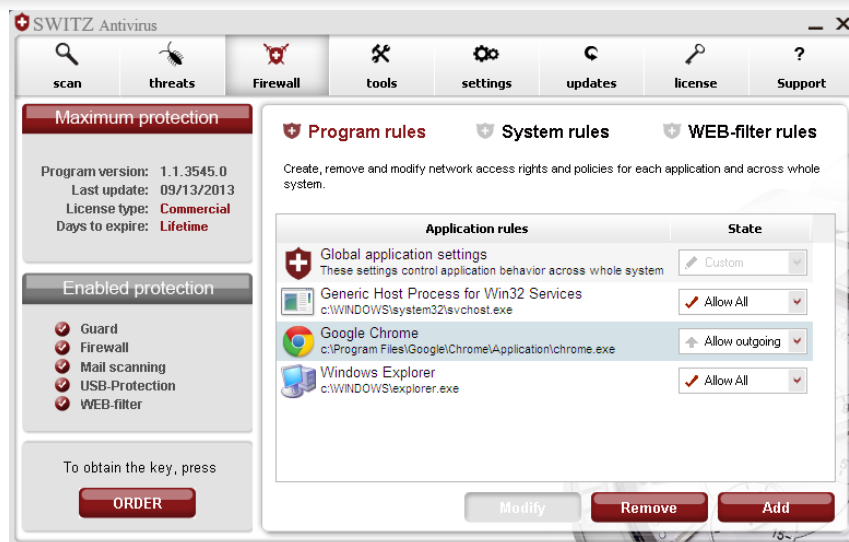
- **Mail check**

Mail filter checks all incoming and outgoing mail messages and attachments which guarantees computer safety.

- **Firewall**

This module is very important if there is a network or Internet in your PC.

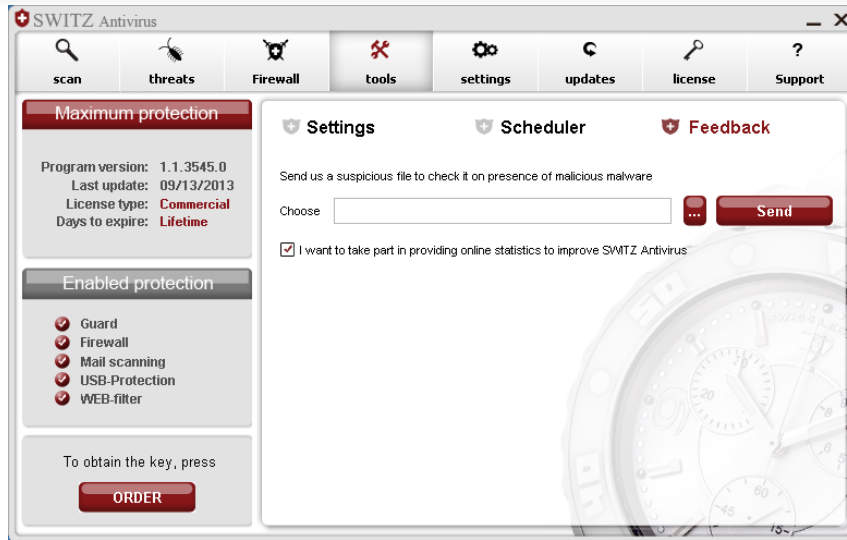
A firewall monitors all attempts of application to access the network - both incoming and outgoing traffic;



- **Protection against external attacks.**
By default Firewall allows applications only outbound connections. This allows to protect system against malicious attempts to take control over it.
- **Built-in set of rules.**
Application has built-in set of rules that have all necessary rules to allow functioning of standard system services and protocols (NetBios, DHCP, DNS etc.) With these rules network activity of particular protocol or service could be easily enabled or disabled.
- **An ability to set global settings for all applications in the system.**
SWITZ Antivirus 2013 has an opportunity to set global settings for all applications. For example, if you need to give an access to server for all applications. To do that, you can set a rule to allow access to certain IP-addresses on port settings. And there will be no need for each application to create separate rules for access to this server.
- **WEB-filter.** Blocking of dangerous sites and malicious content. **SWITZ Antivirus 2013** has an ability to block malicious content from untrusted sites in browser. In this case user is shown a message. If the site is in a "black list", you will be able to attend it, view the images, but not be able to download programs, archives, documents and other files that could potentially harm your computer from this site.

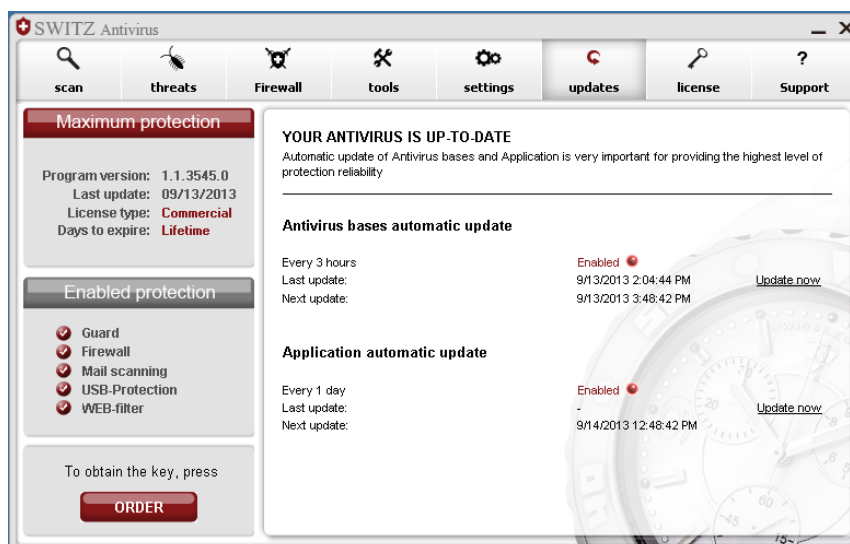
• Feedback

If you have suspicions about certain files, you can send them to our laboratory and participate in collecting statistics. Thus, you can help us respond more quickly to new threats and updating existing ones.



Databases and program modules updates

The effectiveness of antivirus product depends on how regularly virus database is updated. Regular automatic update of databases is critically needed to keep the optimal level of protection of your computer.



Developers of **SWITZ Antivirus 2013** promptly react to new threats, update the antivirus bases and bases of malware. Typically, virus updates are issued 1-2 times a day. In case of epidemics HDD Labs Inc. team prepares updates in accelerated mode to protect users.

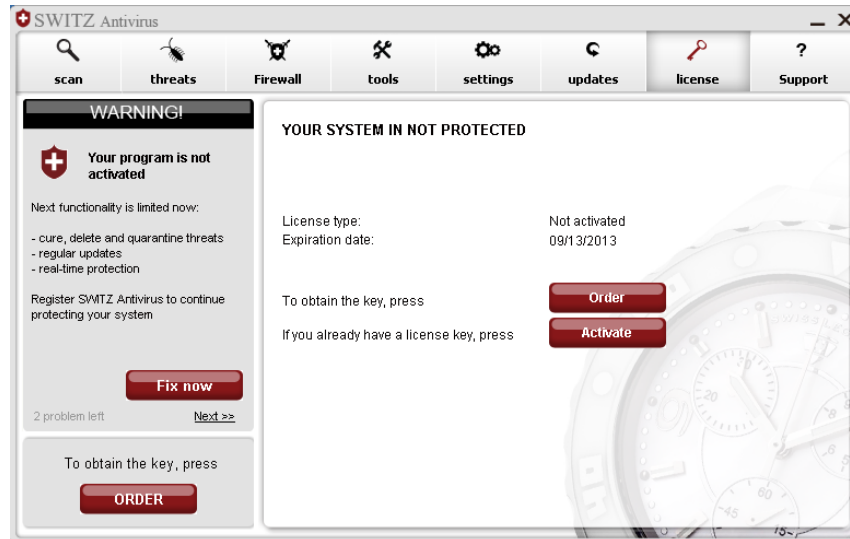
For users who do not have regular access to the Internet, it is possible to use off-line updates of anti-virus.



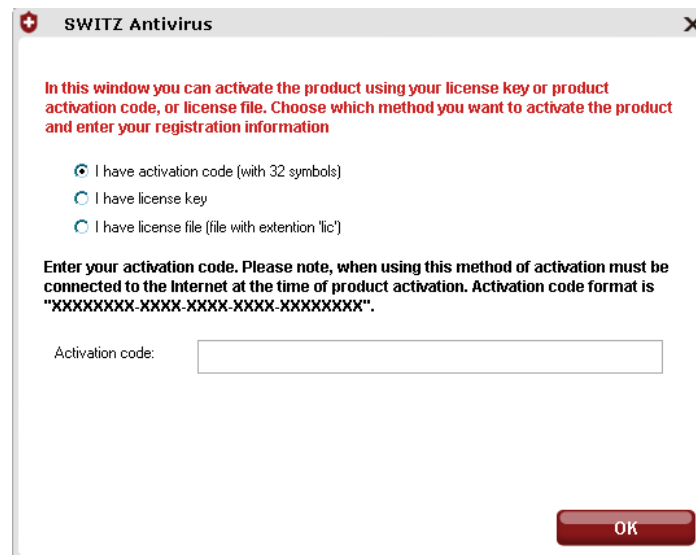
By default, automatic database updates and program modules are enabled. If for any reason you need to disable these settings, return to their original state as soon as possible.

SWITZ Antivirus 2013 registration

This is how unregistered program window looks like:



To register the program, enter/copy the code, which you purchased, to the “License code” box on “License” tab and click "Activate".



You will receive a request to confirm your registration information, and then fill in correct information and click “Send”.



SWITZ Antivirus
Activation

Please, confirm your registration information

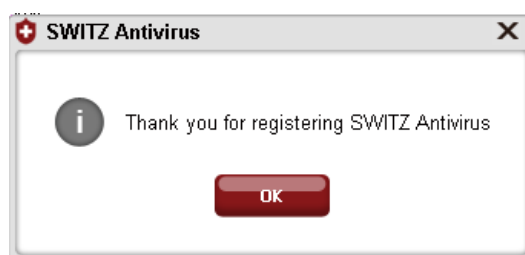
First Name:

Last Name:

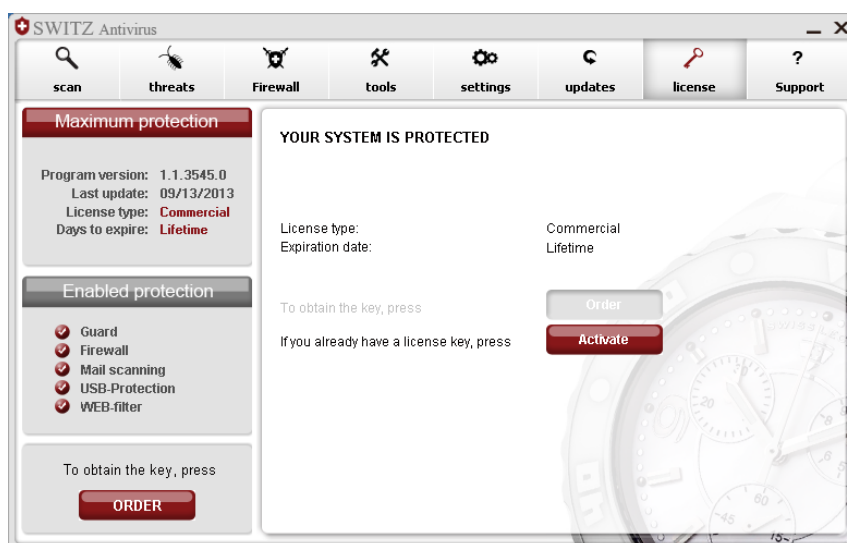
E-mail:

Send

SWITZ Antivirus 2013 will inform you about the successful registration.



This is how the window of registered program looks like.



Customer support

If you have questions about **SWITZ Antivirus 2013**, you can contact customer support service.

Users can use the following:

- E-mail - support@SWITZantivirus.com
- Fill in the request form to customer service.

